



Museum, Gallery and Display Lighting Systems

Brochure 1: LED Lighting

Welcome

UFO Lighting has been specialising in lighting systems for conservation and display since our establishment in 1991. We are the UK's only manufacturer of complete fibre optic lighting systems including the production of the raw glass fibre used to make fibre optic lighting cable.

Over the following three decades the factory has steadily grown in to the 55000 square foot manufacturing facility that it is today with state of the art CNC engineering equipment, a metal fabrication unit and paint and powder coating workshop.

While UFO has been a world leader in fibre optic lighting for over three decades we have not only welcomed the arrival of LEDs for use in the fibre optic lightsources but we have also heavily invested in a range of LED downlights, spots, pavers and linear gantries and wands, many specifically for display cases.

Be it LED or fibre optic lighting that you are interested in, UFO can advise, specify, supply and even install the perfect lighting solution.

This brochure features the UFO LED range for museum and display. Please also view our brochure for fibre optic museum and display lighting.

Credits:

left & right images: www.marilynlondonbridge.co.uk, Michael Grubb Studio

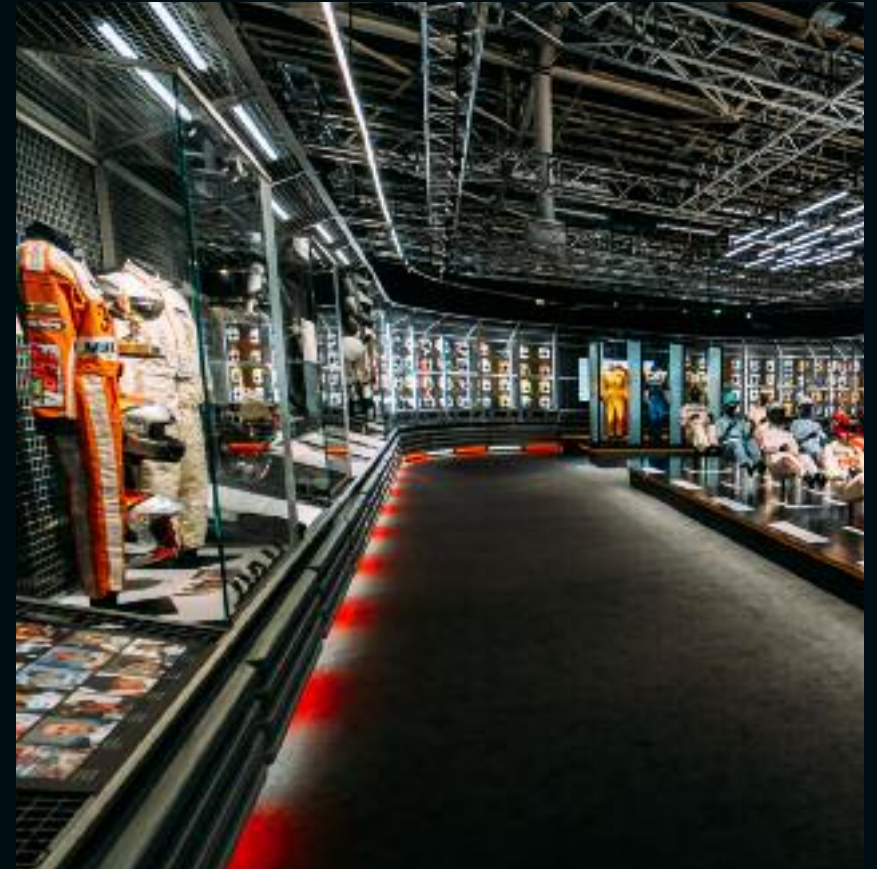
centre image: Faith Museum Bishop Auckland, Sally Ann Norman Photography, National Museums of Scotland

Front cover: Walker Art Gallery Liverpool, Meyvaert NV/SA





Ionic



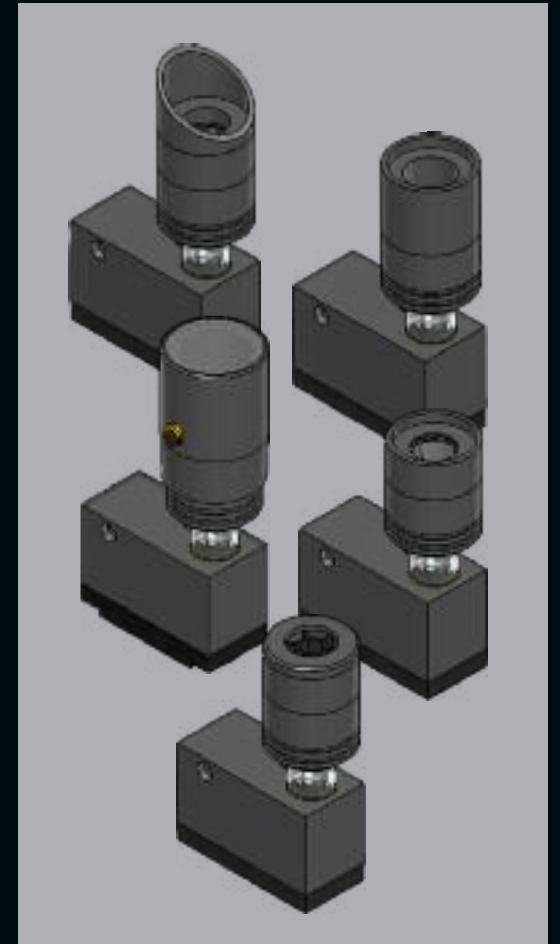
scan for more info



The ultimate magnetic track lighting system for display lighting. Featuring a discrete, low profile track and a wide range of fitting options, the full articulation Ionic fittings can be dimmed either locally, globally or in a combination of both.

The fitting's magnetic attraction to the track allows them to be freely placed, moved and removed without any interference from wires or cables.

The Ionic fittings are available in three different sizes; Ionic SX, Ionic MX and Ionic LX. Choose from three color temperature options and perfect your display with interchangeable lenses, directional and extending snoots and honeycombs.



Credits:

Left image: Hard Rock Casino Rockford USA

Right image: F1 Exhibition. Client: Round Room Studios, lighting Design: Michael Grubb Studio,

Show Production: TRUE Staging & Sysco Productions, Exhibition Designer: Real Studios,

Production Designer: 59 Productions

Caravaggio



scan for more info

Classic. Functional. Controllable. LED picture lighting.

The Powered Gallery Rail is the heart of the Caravaggio and consists of a jointed coaxial rail of customised length carrying DC power.

The brass rail has all the appearance and functionality of a load bearing picture rail complete with brass wall brackets, finials and picture hanging accessories.

The rail is a power source with multifunctional input and output ports distributed at 250mm intervals along its length. These ports allow either DC power to be supplied discretely to the rail from adjacent wall plates or power to be taken again discretely from the rail to support the wide range of UFO Gallery lighting devices.

The picture light consists of a decorative brass shade assembly with a dual track lighting rail which supports up to eight dimmable Gallery LED twist lock fittings. The dual channel LED driver is integral to the shade and provides miniature manual dimming (0-100%) control for each track.



Credits:

Auckland Castle, Sutton Vane Associates,

Jill Tate photography

Attracta

Offering the ultimate in versatility, this system comprises of an extruded aluminium track, available in either surface or corner mount versions, which is paired with any number of magnetic Attracta fittings. The fittings magnetic attraction to the track allows them to be freely placed, moved, slid and removed without any interference from wires or cables. Two spotlight designs are available, each offering a choice of colour temperatures. The larger F2 fitting also offers brighter output.

The Attracta fittings offer full 360° rotation as well as 180° of tilt - so they can be pointed in virtually any direction. There are five colour temperature options for all fittings and the F1 & F2 spotlights have a variety of lens types; from narrow to wide angled. These can all be mixed and matched within the system.

The Attracta track can be powered directly from a DC power supply unit or for complete functionality, should be connected to a UFO Unidrive CV2 multi-function driver.



Credits:

The Library & Museum of Freemasonry London, Sutton Vane Associates,

Vitrinen und Glasbau Reier GmbH



scan for more info



Metroled

A fully modular LED display lighting system with interchangeable fully positionable spotlights and linear LED arrays. MetroLED offers all the flexibility you need for illuminating display cases.

Spotlights are fully tiltable and can be independently moved along the fixture and pointed exactly where you need them. There is also a choice of trumpets which offer either wide or narrow beam angles. Gantry systems also feature rotating corners so that the complete light bar can be rotated by 350°.

UFO MetroLED systems offer versatility combined with the efficiency and power of LED modules, ease of installation and very low maintenance requirements.

Powerful - High powered LED's with both spotlight and linear options.

Controllable - Dual channel dimming system.

Modular - It can be assembled in countless configurations.

Maintainable - If one LED reaches the end of life, replace only that module.





scan for more info



The Stem

A range of sleek and unobtrusive LED lighting systems which can be configured with either 1, 2 or 3 lighting heads. The lighting heads offer independent freedom of movement, and a choice of beam angles and colour temperatures, for the ultimate in flexibility.

Available in either striking black or soft anodised silver finishes, these lights will blend seamlessly into their surroundings and display your products or exhibits in the way they deserve to be shown.

Choose from fixed stem, removable stem or telescopic stem.



Credits:

Left & centre: www.marilynlondonbridge.co.uk, Michael Grubb Studio

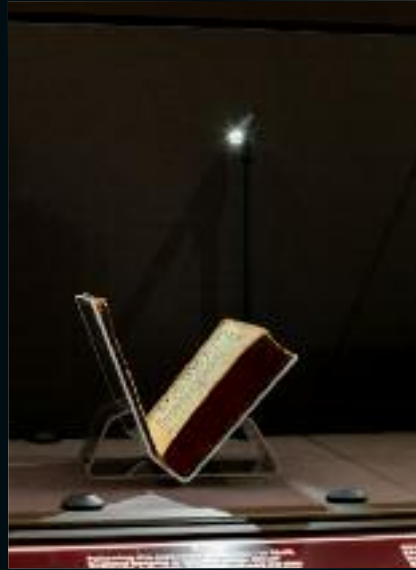
Right image: Walker Art Gallery Liverpool, Meyvaert NV/SA



scan for more info



LPV2



The UFO LPV2 fitting features a sleek design and 360° rotation with 90° + 45° articulation in the pivot.

The stalk can be configured in a number of lengths from a short 80mm to the longest 350mm.

Available in a choice of colour temperatures with high colour rendition and a selection of optics, the fitting can be used to provide contemporary, functional lighting in any environment.



scan for more info

Monoled



The UFO Monoled linear gantry system features a sleek 20mm diameter main body and is fitted with two legs of the same size.

It uses a diffused LED tape to provide a bright wash of light suitable for all display applications.

MonoLED is a simple linear light offering multiple colour temperatures, a high CRI and clean, crisp illumination.

Colour temperatures available: 2700K, 3000K or 4000K

CRI 97

950lm per metre

Beam angle 100°

scan for more info

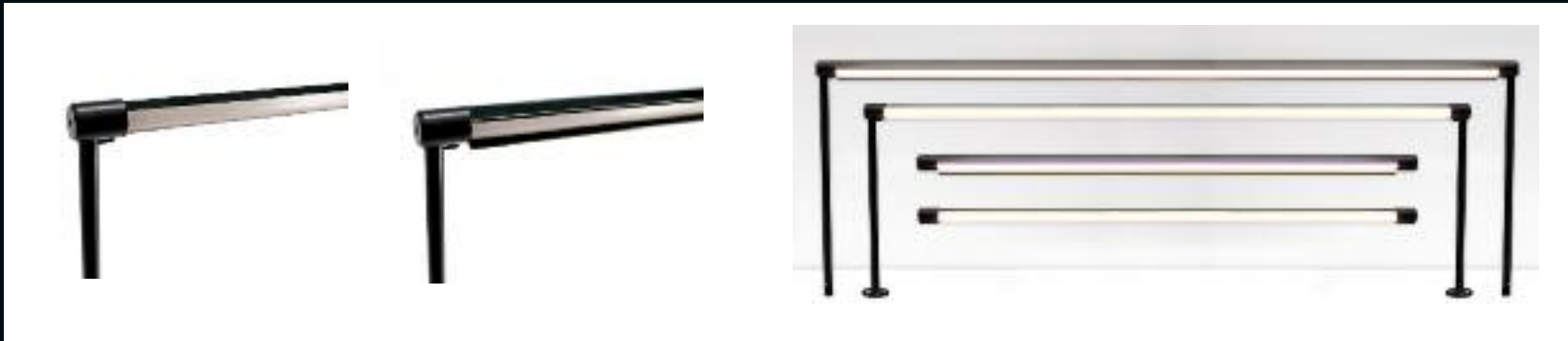
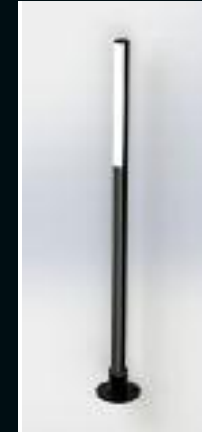


Apollo

A contemporary LED lighting system which has been specially designed for use where unobtrusive but powerful and controllable lighting is required for display illumination.

The Apollo is available in three configurations - a gantry, a linear wand and a freestanding stalk. The Apollo's main body is a discrete 12mm diameter with the option of adding a removable cowl for anti-glare. The cowl can also be used to focus the light spread.

This system includes a lockable rotation feature for directional control of the light. The linear wand option, which features an inbuilt magnetic mounting system, makes positioning of the system effortless.



Credits:

Faith Museum Bishop Auckland, Sally Ann Norman Photography,

National Museums of Scotland



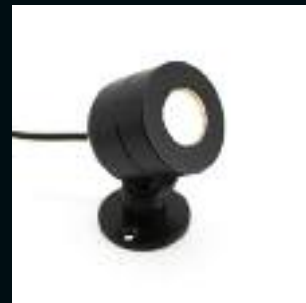
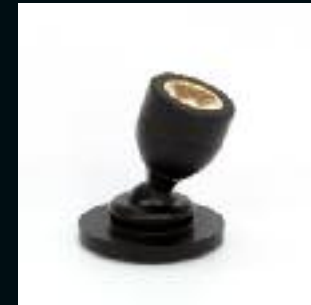
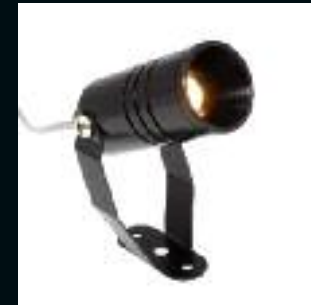
scan for more info



UFO Downlight and spot range

UFO boasts a wide range of LED downlights and spots in a range of styles ; fixed, articulated, recessed or surface mount with a choice of colour temperatures and beam angles.

As our fittings conform to the one step binning process, you can be sure of colour consistency throughout the complete range.





link to LED downlight range



link to LED spot light range



Universal Fibre Optics Ltd

Home Place

Coldstream

TD12 4DT

Tel: +44 (0)1890883416

Web: www.ufo.lighting

email: info@fiberopticlighting.com

Universal Fiber Optic Lighting LLC

1749 Northgate Blvd

Sarasota

Florida 34234

Tel: +1 (941) 343-8115

Web: www.fiberopticlighting.com

Email: info@fiberopticlighting.com

UFO Licht GmbH

Andreasstraße 20

93059 Regensburg

Germany

Tel: +49(0)9491 95588 0

Web: www.ufo-licht.de

Email: louise@ufo-licht.de

Dubai office coming soon
contact us for more information

Credits:

from top: Science Museum London, Sutton Vane Associates, Halos manufactured by UFO.

Image 2: Glenlivet Visitor Centre, Blacksheep, Into Lighting,

Image 3: Kuwait SAASCC blood cells, Sutton Vane Associates,

Image 4: V&A Museum London, Iota