





## UFO SELF INSTALL CABINET AND DISPLAY SYSTEMS OFFER:

**Self Install** - All our kits come with full instructions and can be quickly installed by almost anyone.

**Dimming** - Our kits are dimmable at the turn of a knob, and offer DMX functionality for more controlled use.

**Great Colour Rendition** - A choice of colour temperatures and high CRI on all our display lighting products.

**Fast Delivery** - All kits in this brochure are available off-the-shelf for fast delivery, worldwide.

**Full Support** - If you need us, we're based in the UK and are happy to help with any questions.

ALL KITS ARE AVAILABLE  
OFF-THE-SHELF FOR A  
SHORT DELIVERY TIME

# ILLUMINATING OBJECTS IN CABINETS AND DISPLAY CASES

## AMAZING EXHIBITS DESERVE AMAZING LIGHTING

UFO lighting offers one of the largest and most diverse range of products specially manufactured to safely illuminate display cabinets and their contents.

With over 25 years' experience in working with some of the world's most highly regarded display case manufacturers, we have provided display illumination in museums and galleries worldwide.

We feel that our highly regarded lighting systems deserve the widest possible audience, so to address this, we have created a new range of affordable, easy-to-install display lighting kits.

Aimed squarely at cabinet makers, retail merchandisers and museum exhibit arrangers, our new range of kits all come with full instructions and all components needed to provide a display case with amazing lighting in as short a time as possible.

Our range of specialist display lighting kits are stylish and functional yet can be amazingly discrete, and with the safety and easy maintenance that only fibre optic or low voltage LED lighting can offer, you can be assured that you are investing in the best possible lighting solution.

As we are a complete systems manufacturer, we are also able to offer enhanced kits and custom designed components unique to your installation. If you do not see what you require in this brochure or have your own ideas for a system, please get in touch with our experienced sales engineers who will be able to advise on suitable solutions.

## WHY CHOOSE A UFO LIGHTING SYSTEM?

**Style** - High quality finishes in a range of materials and colours.

**Discrete Design** - Can be hidden from view but still produce impressive results.

**Function** - Focusable and articulated options are available.

**Safety** - No heat in fibre optic tails or end fittings.

**Choice** - One of the largest ranges in the industry.

**Quality** - Thoroughly examined and tested before despatch.



## IMAGE CREDITS

**Click Netherfield:**

Maidstone Museum  
The Polar Museum  
Cambridge Press Museum  
Stirling Castle  
Museum of Liverpool

**The Art Gallery of Ontario:**

The Thomson Collection

**Maevert:**

The Novium, Chichester

**Hufton+Crow:**

Salisbury & South Wiltshire Museum

**Philip Vile:**

National Maritime Museum

**Brady Harvey:**

The EMP Museum

**Somerset Heritage Services SSC:**

Museum of Somerset

**Freepik:**

Cover graphics









A museum of international renown, the Ulster Folk & Transport Museum is regarded as being amongst the best of its kind in the world. Set in over 170 acres of rolling landscape overlooking Belfast Lough, visitors can wander through the past and discover how people lived and travelled through the centuries.

In 2011 the museum opened an exhibition dedicated to the ill-fated Titanic, which had been constructed by local ship builders Harland and Wolff. The exhibition's opening coincided with the centenary of the ship's maiden voyage and showcased more than 500 original artefacts including plans of the ship and items rescued from its sunken hull.

UFO's fibre optic products were chosen to illuminate the historic artefacts, as no heat or ultraviolet rays would be emitted from the end points of the light and so would not cause any irreversible damage to the exhibition's delicate items.

Adjustable downlights were installed in the ceiling of each display cabinet and could be easily be tilted and rotated by the museum personnel to highlight specific aspects of the display below. Each downlight was connected to an individual strand of glass fibre that ran through vertical tubing to the base of the case where it is powered by our light sources. The black tubing which was used to conceal the fibre was placed in the corner of each display case, allowing it to blend seamlessly with the display cases and ensure that it didn't distract visitors' attention from the items on show.

A tungsten halogen light source was located in the base of each display and could easily be accessed by the museum personnel as and when maintenance was required. Our Ixion and Aurora models were chosen due to their compact size, and cool and quiet running.

## Project Information

### 📍 Museum Case Lighting

**Light sources:** Aurora tungsten halogen

**Harnesses:** Glass fibre, 4mm active diameter

**End fittings:** Custom end fittings

📍 **Location:** Belfast, Northern Ireland

📋 **Category:** Public realm, display lighting

👤 **Client:** Click Netherfield

📅 **Project completed:** 2011

📷 **Images:** Click Netherfield



The new cabinet lighting kits from UFO. Cost effective self install fibre optic lighting systems for display illumination.

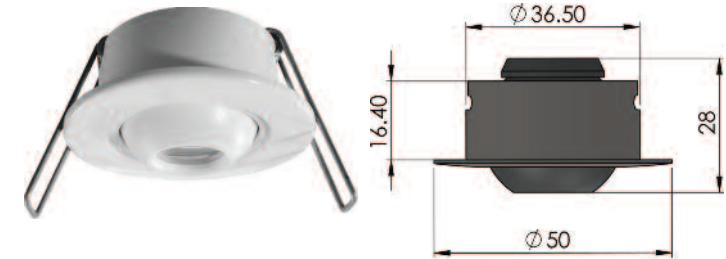
The kits include a powerful DMX compatible light source with manual dimming control via a rear knob and a choice of 2 colour temperatures; both featuring a colour rendering index (CRI) of over 90.

Fittings included are easy to install - just drill a 40mm diameter hole and fit them into place - and are fully articulated allowing the clean, crisp white light to be directed to exactly where it's needed.

A choice of fibre harness types; glass or PMMA complete the kit specifications. Both offer great light output and are a suitable choice for display lighting systems.

## UFO 11D FIBRE OPTIC FITTINGS

Technical Specifications	
Lens	18mm clear focusing lens
Focus range	30° - 50°
Rotation / tilt	360° rotation / 20° tilt
Colour	Black or white / custom RAL
Weight	21.9g
Mounting details	40mm mounting hole, secured by springs



## FIBRE OPTIC HARNESS

We can supply these kits with a choice of either glass or PMMA fibre for the ultimate flexibility.

Both harness types offer great light output. PMMA fibre is a more cost effective option, however for unparalleled light output and the best colour rendition, UFO glass fibre harness will show your displayed objects in their best possible light.

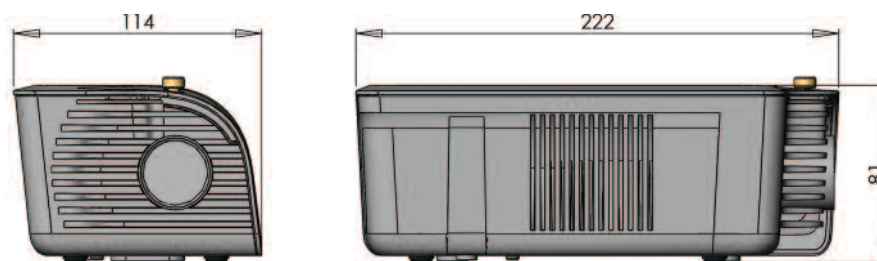
Both types of fibre measure 4mm active diameter and come with tails that are terminated with polished ferrules for attaching to the 11D fittings, and a polished common end to plug into the light source.



# WITH RECESSED EYEBALL

## GEMINI LED LIGHT SOURCE

Technical Specifications	
Mains supply voltage	100-240V AC 50/60Hz 0.12A
PSU output	12V DC 5A
LED power	20W
CRI	>93
Luminous efficacy	69 lm/W
DMX control	User addressable one channel dimming
Dimming	DMX, 0-10V or manually operated - 0% to 100%
LED life	50,000 hours in ambient 25°C
Colour temperature	3000K or 4000K
Acoustic rating	20dB
Enclosure	Light grey ABS, 222mm x 114mm x 81mm



MANUAL DIMMING  
CONTROL AND  
BUILT IN DMX FOR  
ADVANCED USE

## ORDERING CODES

End Fittings	Fibre Optic Tails	Colour Temp	Fibre Type	Ordering Code WITH WHITE FITTINGS	Price	Ordering Code WITH BLACK FITTINGS	Price
6 x UFO 11D	6 x tails all at 2.5m length	3000K <sup>[1]</sup>	PMMA	CD11-6W-3000-P		CD11-6B-3000-P	
8 x UFO 11D	8 x tails all at 2.5m length	3000K <sup>[1]</sup>	PMMA	CD11-8W-3000-P		CD11-8B-3000-P	
10 x UFO 11D	10 x tails all at 2.5m length	3000K <sup>[1]</sup>	PMMA	CD11-10W-3000-P		CD11-10B-3000-P	
6 x UFO 11D	6 x tails all at 2.5m length	3000K <sup>[1]</sup>	Glass	CD11-6W-3000-G		CD11-6B-3000-G	
8 x UFO 11D	8 x tails all at 2.5m length	3000K <sup>[1]</sup>	Glass	CD11-8W-3000-G		CD11-8B-3000-G	
10 x UFO 11D	10 x tails all at 2.5m length	3000K <sup>[1]</sup>	Glass	CD11-10W-3000-G		CD11-10B-3000-G	

[1] Standard colour temperature is 3000K. If 4000K is required amend the order code to state 4000 instead of 3000.

## CUSTOM OPTIONS

The 11D fittings in this kit are supplied as standard in either black or white.

We can also provide them in any custom RAL colour to match your requirements.

This is an extra cost option and will have an added lead time.

Please contact us to discuss your requirements.





The new cabinet lighting kits from UFO. Cost effective self install fibre optic lighting systems for display illumination.

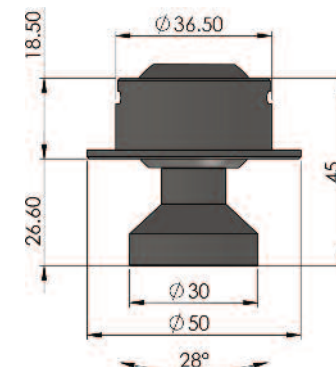
The kits include a powerful DMX compatible light source with manual dimming control via a rear knob and a choice of 2 colour temperatures; both featuring a colour rendering index (CRI) of over 90.

Fittings included are easy to install - just drill a 40mm diameter hole and fit them into place - and are fully articulated allowing the clean, crisp white light to be directed to exactly where it's needed.

A choice of fibre harness types; glass or PMMA complete the kit specifications. Both offer great light output and are a suitable choice for display lighting systems.

## UFO 10D FIBRE OPTIC FITTINGS

Technical Specifications	
Lens	26mm clear focusing lens
Focus range	25° - 45°
Rotation / tilt	360° rotation / 28° tilt
Colour	Black or white / custom RAL
Weight	28.1g
Mounting details	40mm mounting hole, secured by springs



## FIBRE OPTIC HARNESS

We can supply these kits with a choice of either glass or PMMA fibre for the ultimate flexibility.

Both harness types offer great light output. PMMA fibre is a more cost effective option, however for unparalleled light output and the best colour rendition, UFO glass fibre harness will show your displayed objects in their best possible light.

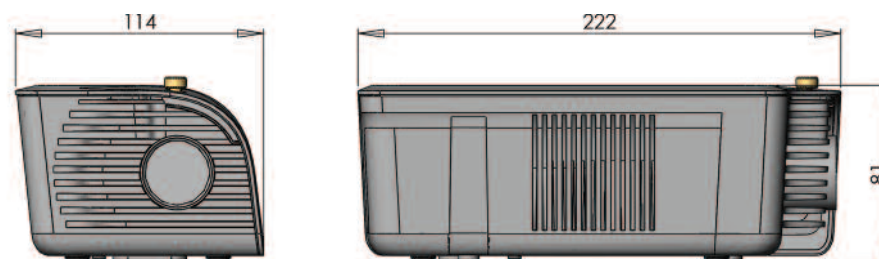
Both types of fibre measure 4mm active diameter and come with tails that are terminated with polished ferrules for attaching to the 10D fittings, and a polished common end to plug into the light source.





## GEMINI LED LIGHT SOURCE

Technical Specifications	
Mains supply voltage	100-240V AC 50/60Hz 0.12A
PSU output	12V DC 5A
LED power	20W
CRI	>90
Luminous efficacy	69 lm/W
DMX control	User addressable one channel dimming & one channel power off
Dimming	DMX, 0-10V or manually operated - 0% to 100%
LED life	50,000 hours in ambient 25°C
Colour temperature	3000K or 4000K
Acoustic rating	20dB
Enclosure	Light grey ABS, 222mm x 114mm x 81mm



MANUAL DIMMING  
CONTROL AND  
BUILT IN DMX FOR  
ADVANCED USE

## ORDERING CODES

End Fittings	Fibre Optic Tails	Colour Temp	Fibre Type	Ordering Code WITH WHITE FITTINGS	Price	Ordering Code WITH BLACK FITTINGS	Price
6 x UFO 10D	6 x tails all at 2.5m length	3000K <sup>[1]</sup>	PMMA	CD10-6W-3000-P		CD10-6B-3000-P	
8 x UFO 10D	8 x tails all at 2.5m length	3000K <sup>[1]</sup>	PMMA	CD10-8W-3000-P		CD10-8B-3000-P	
10 x UFO 10D	10 x tails all at 2.5m length	3000K <sup>[1]</sup>	PMMA	CD10-10W-3000-P		CD10-10B-3000-P	
12 x UFO 10D	12 x tails all at 2.5m length	3000K <sup>[1]</sup>	PMMA	CD10-12W-3000-P		CD10-12B-3000-P	
6 x UFO 10D	6 x tails all at 2.5m length	3000K <sup>[1]</sup>	Glass	CD10-6W-3000-G		CD10-6B-3000-G	
8 x UFO 10D	8 x tails all at 2.5m length	3000K <sup>[1]</sup>	Glass	CD10-8W-3000-G		CD10-8B-3000-G	
10 x UFO 10D	10 x tails all at 2.5m length	3000K <sup>[1]</sup>	Glass	CD10-10W-3000-G		CD10-10B-3000-G	
12 x UFO 10D	12 x tails all at 2.5m length	3000K <sup>[1]</sup>	Glass	CD10-12W-3000-G		CD10-12B-3000-G	

## CUSTOM OPTIONS

The 10D fittings in this kit are supplied as standard in either black or white.

We can also provide them in any custom RAL colour to match your requirements.

This is an extra cost option and will have an added lead time.

Please contact us to discuss your requirements.

[1] Standard colour temperature is 3000K. If 4000K is required amend the order code to state 4000 instead of 3000.



Ever  
tells

Rocks are  
Look close  
structure  
the rocks  
earth, on  
rocks can  
when the  
Rocks are  
forces of  
change a  
Locking a  
can work  
what for

Transforming  
rocks





Situated amongst the historic cobbled streets and tenement buildings of Edinburgh's Old Town lies the National Museum of Scotland. The popular tourist attraction, which has undergone a £47 million redevelopment project that took three years to complete, has been voted amongst the Top 10 visitor attractions in the UK and one of the Top 20 most visited museums in the world.

Millions of visitors pass through the impressive museum's doors each year to view the spectacular collections of rare and priceless artefacts which will take them on an inspirational journey through the history of Scotland, the wonders of nature, a host of world cultures and the excitement of science and discovery.

In 2011 display case manufacturers, Click Netherfield, were asked to install a new display case in the museum. Due to the lack of natural light in certain areas it was imperative that the case incorporated lighting that wouldn't damage the artefacts in anyway and so Click Netherfield turned to UFO for assistance.

We were able to supply them with an Aurora light source with an integral manual dimmer that proved extremely beneficial, as it meant that the museum staff could manually adjust the level of light in the display case to complement the items on display in the dark environment.

A series of directional downlights were installed in the ceiling of the display case and could easily be moved and angled to pinpoint and illuminate specific details of the display below. A UFO harness containing tails of glass fibre was used to connect each of the downlights to the single light source in the base of the display case.

## Project Information

### 📍 Museum Case Lighting

**Light sources:** Aurora tungsten halogen

**Harnesses:** Glass fibre, 4mm active diameter

**End fittings:** Custom designed for project

📍 **Location:** Edinburgh, Scotland

📋 **Category:** Public realm, display lighting

👤 **Client:** Click Netherfield

📅 **Project completed:** 2011

📷 **Images:** Click Netherfield



## OVERVIEW

Our LD5 LED lighting kits offer a quick and easy solution for lighting cabinets and display cases of all shapes and sizes.

This kit features our best selling LD5 fitting which is fitted with an adjustable trumpet allowing the light to be directed exactly where it is needed.

Also included is a driver unit which allows you to control the overall dimming level of the lighting via a potentiometer which can be mounted in a standard 1 gang pattress box, a splitter box and 2.5 metres of cable for each fitting.

## EASY INSTALLATION

The LD5 fitting is easily installed in a variety of mounting surfaces and is held in place with a supplied retaining nut which is not visible once the fitting is installed.

The fitting requires a 34mm cutout in the mounting surface.

Once the holes are cut, you simply push the fittings into place, secure with their retaining nut and connect their power cables to the splitter box and switch on.

## LED TECHNICAL SPECIFICATIONS

Description	Details
LED type	Oslon, white light
Voltage	2.9V (min.) - 3.0V (max.)
Power consumption	1.12W per fitting, not inc. driver
Colour temperatures / CRI	3000K - warm white / 95CRI 4000K - neutral white / 95CRI
Dimming	Manual 0-100%
Typical luminous flux	3000K - 60lm / 4000K - 68lm
Beam angle	23°
LED life	50,000 hours in ambient 25°C
Material / Finish	Aluminium, black or silver



# WITH LD5 ARTICULATED TRUMPET



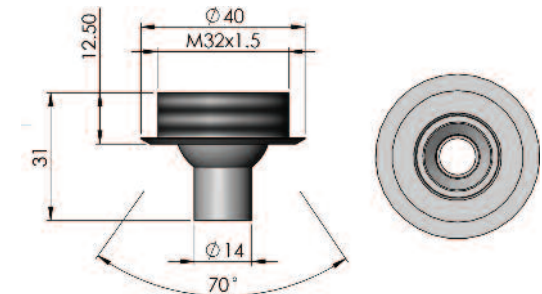
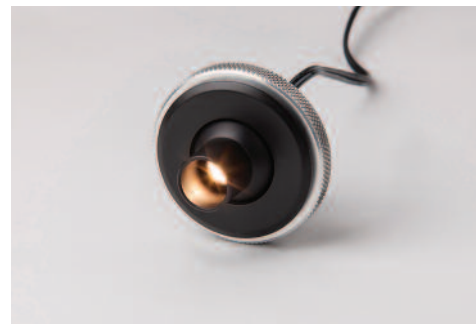
THE LD5 SYSTEM IS  
OUR BEST SELLING  
LED DOWNLIGHT KIT

**LD5 LED DOWNLIGHT KIT** AN ARTICULATED FITTING WITH A TILTABLE TRUMPET TO ALLOW PRECISELY DIRECTED LIGHT. 2.5M OF CABLE ON EACH FITTING

No. of Fittings	Bezel Colour	Ordering Code	Price
4 x LD5	Black	CLED-LD5-4B+[COLOUR TEMPERATURE]*	
4 x LD5	Silver	CLED-LD5-4S+[COLOUR TEMPERATURE]*	
6 x LD5	Black	CLED-LD5-6B+[COLOUR TEMPERATURE]*	
6 x LD5	Silver	CLED-LD5-6S+[COLOUR TEMPERATURE]*	
8 x LD5	Black	CLED-LD5-8B+[COLOUR TEMPERATURE]*	
8 x LD5	Silver	CLED-LD5-8S+[COLOUR TEMPERATURE]*	
10 x LD5	Black	CLED-LD5-10B+[COLOUR TEMPERATURE]*	
10 x LD5	Silver	CLED-LD5-10S+[COLOUR TEMPERATURE]*	
12 x LD5	Black	CLED-LD5-12B+[COLOUR TEMPERATURE]*	
12 x LD5	Silver	CLED-LD5-12S+[COLOUR TEMPERATURE]*	




**LUMENS/WATT**  
3000K: 68LM/W  
4000K: 68LM/W



\* ADD COLOUR TEMPERATURE TO END OF CODE  
(3K - 3000K / 4K - 4000K). E.G. CLED-LD5-4B-3K



## OVERVIEW

Our range of LED lighting kits offer a quick and easy solution for lighting cabinets and display cases of all shapes and sizes.

There are 3 types of fittings to choose from and each kit is supplied with a total of 6 units. Colour temperatures and lens angle can be specified in ordering code.

Also included is a driver unit which allows you to control the overall dimming level of the lighting via a potentiometer which can be mounted in a standard 1 gang pattress box, a splitter box and 2.5 metres of cable for each fitting.

## EASY INSTALLATION

All 3 fitting types are easily installed in a variety of mounting surfaces and are held in place with robust securing springs which are not visible once installed.

Once the holes are cut, you simply push the fittings into place, connect their power cables to the splitter box and switch on.

See individual kit pages for mounting hole cutout sizes.

## SEE THE FOLLOWING 3 PAGES FOR KITS BASED ON THIS SPECIFICATION

## LED TECHNICAL SPECIFICATIONS

Description	Details
LED type	Oslon, white light
Voltage	2.9V (min.) - 3.0V (max.)
Power consumption	1.12W per fitting, not inc. driver
Colour temperatures / CRI	3000K - warm white / 95CRI 4000K - neutral white / 95CRI
Dimming	Manual 0-100%
Typical luminous flux*	3000K - 71lm / 4000K - 73lm
Lens Options	Narrow - 13.5° Medium - 19° Wide - 28°
LED life	50,000 hours in ambient 25°C
Material / Finish	Aluminium, black or white

\* MEASURED WITH 19° LENS



# WITH LD1 FLUSH DOWNLIGHT FITTINGS



FEATURING A DISCRETE BEVELLED BEZEL AND GREAT LIGHT OUTPUT

The LD1 comes with a choice of colour temperatures, high colour rendition and narrow, medium and wide beam options to suit varying requirements.

Dimming is available via the supplied potentiometer which can be mounted in a standard 1 gang pattress box and fitted with a decorative cover plate if required.

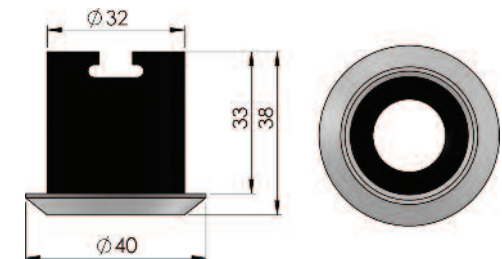
Whether you want to gently wash the interior of a cabinet or highlight specific areas or niches, it is achievable with the LD1.

## LD1 LED DOWNLIGHT KIT A FIXED DOWNLIGHT KIT WITH SMALL ANGULAR BEZELED FITTINGS, EACH WITH A 2.5 METRE CABLE

No. of Fittings	Bezel Colour	Ordering Code	Price
4 x LD1	Black	CLED-LD1-4B+[COLOUR TEMP]+[LENS]*	
4 x LD1	Silver	CLED-LD1-4S+[COLOUR TEMP]+[LENS]*	
6 x LD1	Black	CLED-LD1-6B+[COLOUR TEMP]+[LENS]*	
6 x LD1	Silver	CLED-LD1-6S+[COLOUR TEMP]+[LENS]*	
8 x LD1	Black	CLED-LD1-8B+[COLOUR TEMP]+[LENS]*	
8 x LD1	Silver	CLED-LD1-8S+[COLOUR TEMP]+[LENS]*	
10 x LD1	Black	CLED-LD1-10B+[COLOUR TEMP]+[LENS]*	
10 x LD1	Silver	CLED-LD1-10S+[COLOUR TEMP]+[LENS]*	
12 x LD1	Black	CLED-LD1-12B+[COLOUR TEMP]+[LENS]*	
12 x LD1	Silver	CLED-LD1-12S+[COLOUR TEMP]+[LENS]*	




**LUMENS/WATT**  
 3000K: 64LM/W  
 4000K: 70LM/W



\* ADD LENS TYPE & COLOUR TEMP TO END OF CODE  
 (WD - WIDE / ME - MEDIUM / NA - NARROW & 3K / 4K) E.G. CLED-LD1-6B-WD-3K

# WITH LD2 FLUSH DOWNLIGHT FITTINGS



WITH A SMOOTH FLUSH BEZEL WHICH BLENDS EASILY INTO SURROUNDINGS

With a bezel spanning 48mm in diameter and a recess depth of 35.50mm, the LD2 is slightly larger in stature than the LD1. Unlike its counterpart, this aluminium fitting comes with a flush bezel for those requiring an unobtrusive transition between downlight and mounting surface

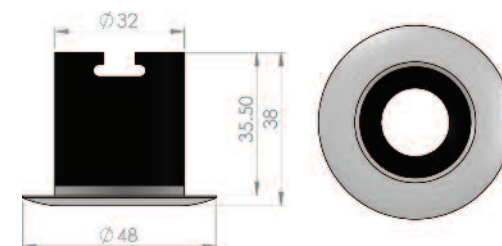
The LD2 is available with a choice of colour temperatures, beam angle options and dimming functionality to provide greater control over your lighting.

## LD2 LED DOWNLIGHT KIT A FIXED DOWNLIGHT KIT WITH WIDE, SMOOTH FLANGED FITTINGS EACH WITH 2.5 METRES OF CABLE

No. of Fittings	Bezel Colour	Ordering Code	Price
4 x LD2	Black	CLED-LD2-4B+[COLOUR TEMP]+[LENS]*	
4 x LD2	Silver	CLED-LD2-4S+[COLOUR TEMP]+[LENS]*	
6 x LD2	Black	CLED-LD2-6B+[COLOUR TEMP]+[LENS]*	
6 x LD2	Silver	CLED-LD2-6S+[COLOUR TEMP]+[LENS]*	
8 x LD2	Black	CLED-LD2-8B+[COLOUR TEMP]+[LENS]*	
8 x LD2	Silver	CLED-LD2-8S+[COLOUR TEMP]+[LENS]*	
10 x LD2	Black	CLED-LD2-10B+[COLOUR TEMP]+[LENS]*	
10 x LD2	Silver	CLED-LD2-10S+[COLOUR TEMP]+[LENS]*	
12 x LD2	Black	CLED-LD2-12B+[COLOUR TEMP]+[LENS]*	
12 x LD2	Silver	CLED-LD2-12S+[COLOUR TEMP]+[LENS]*	



**LUMENS/WATT**  
 3000K: 64LM/W  
 4000K: 70LM/W



\* ADD LENS TYPE & COLOUR TEMP TO END OF CODE  
 (WD - WIDE / ME - MEDIUM / NA - NARROW & 3K / 4K) E.G. CLED-LD2-6B-WD-3K



# WITH LD3 ARTICULATED DOWNLIGHT FITTINGS



 Cutout size: 48mm

A FLUSH ARTICULATED FITTING, THE LD3 OUTPUTS BRIGHT DIRECTIONAL LIGHT

The LD3 downlight utilises an Oscon LED, and carries the added benefit of being adjustable. The versatile fitting, which can tilt up to 27°, comes with a choice of 3 beam options to allow you to direct the light exactly where it is needed.

## LD3 LED DOWNLIGHT KIT A WIDE ARTICULATED FITTING WITH 27° TILT TO ALLOW PRECISELY DIRECTED LIGHT | 2.5M OF CABLE ON EACH FITTING

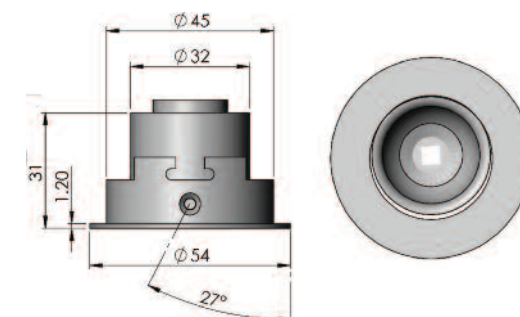
No. of Fittings	Bezel Colour	Ordering Code	Price
4 x LD3	Black	CLED-LD3-4B+[COLOUR TEMP]+[LENS]*	
4 x LD3	Silver	CLED-LD3-4S+[COLOUR TEMP]+[LENS]*	
6 x LD3	Black	CLED-LD3-6B+[COLOUR TEMP]+[LENS]*	
6 x LD3	Silver	CLED-LD3-6S+[COLOUR TEMP]+[LENS]*	
8 x LD3	Black	CLED-LD3-8B+[COLOUR TEMP]+[LENS]*	
8 x LD3	Silver	CLED-LD3-8S+[COLOUR TEMP]+[LENS]*	
10 x LD3	Black	CLED-LD3-10B+[COLOUR TEMP]+[LENS]*	
10 x LD3	Silver	CLED-LD3-10S+[COLOUR TEMP]+[LENS]*	
12 x LD3	Black	CLED-LD3-12B+[COLOUR TEMP]+[LENS]*	
12 x LD3	Silver	CLED-LD3-12S+[COLOUR TEMP]+[LENS]*	



Available in 2 colour temperatures with a high colour rendition and dimming, the fitting is ideally suited for indoor use in a range of environments.

The downlight features a bezel of 54mm in diameter and can be supplied in a choice of colours to complement almost any décor.

 **LUMENS/WATT**  
3000K: 65LM/W  
4000K: 72LM/W



\* ADD LENS TYPE & COLOUR TEMP TO END OF CODE  
(WD - WIDE / ME - MEDIUM / NA - NARROW & 3K / 4K) E.G. CLED-LD3-6B-WD-3K



## OVERVIEW

The smallest of the UFO MBL range of LED fittings, the MBL1 features the same magnetic articulation system present in all the fittings in the range.

The magnetic ball allows complete freedom of movement, so the fitting can be tilted and rotated to point exactly as required.

Available in 2 colour temperatures and with a wide range of available optics, the MBL1 is finished to complement any decor and provides contemporary, functional light in any environment.

## EASY INSTALLATION

The MBL fitting range can be easily installed on any rigid surface.

Simply pull the base cap up from the mounting foot to reveal the 3 mounting holes.

Mark the positions for the holes and also mark a position for the fittings power cable. Drill pilot holes for the mounting screws and a 5mm diameter hole for power cable.

Push the power cable through hole, and screw the fitting to mounting surface.

Finally, connect all power cables to the junction box and switch on power.

## LED TECHNICAL SPECIFICATIONS

Description	Details
LED type	Oslon, white light
Voltage	5 VDC
Drive Current	100mA
Colour temperatures / CRI	3000K - warm white / 95CRI 4000K - neutral white / 95CRI
Dimming	Manual 0-100%
Typical luminous flux	3000K - 82-104lm 4000K - 89-112lm
Lens Options	Narrow - 16° Narrow/Medium - 23° Medium - 36° Wide - 61°
LED life	50,000 hours in ambient 25°C
Material / Finish	Aluminium, black or white



# SMALL FITTINGS WITH MAGNETIC ARTICULATION



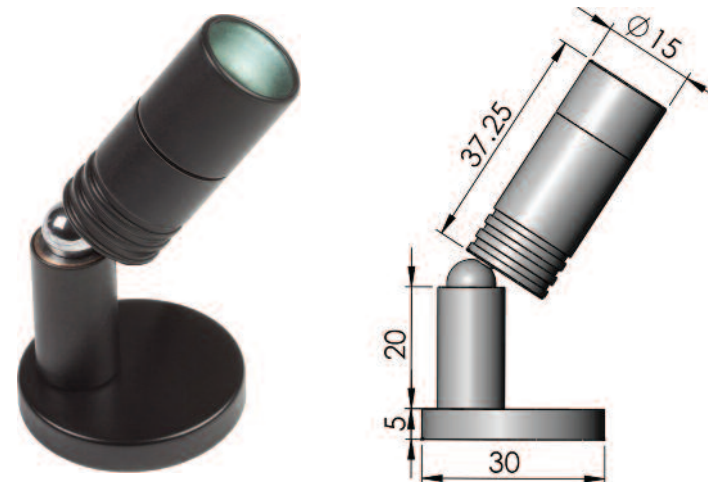
SMALL SURFACE  
MOUNT DOWNLIGHT  
WITH FULL 360°  
ARTICULATION



LUMENS/WATT  
3000K: 37LM/W  
4000K: 40LM/W

**MBL1 LED DOWNLIGHT KIT** A SMALL MAGNETIC FITTING WITH FULL TILT AND ROTATION | 2.5M OF CABLE ON EACH FITTING

No. of Fittings	Bezel Colour	Ordering Code	Price
4 x MBL1	Black	CLED-MBL1-4B+[COLOUR TEMP]+[LENS]*	
4 x MBL1	Silver	CLED-MBL1-4S+[COLOUR TEMP]+[LENS]*	
6 x MBL1	Black	CLED-MBL1-6B+[COLOUR TEMP]+[LENS]*	
6 x MBL1	Silver	CLED-MBL1-6S+[COLOUR TEMP]+[LENS]*	
8 x MBL1	Black	CLED-MBL1-8B+[COLOUR TEMP]+[LENS]*	
8 x MBL1	Silver	CLED-MBL1-8S+[COLOUR TEMP]+[LENS]*	
10 x MBL1	Black	CLED-MBL1-10B+[COLOUR TEMP]+[LENS]*	
10 x MBL1	Silver	CLED-MBL1-10S+[COLOUR TEMP]+[LENS]*	
12 x MBL1	Black	CLED-MBL1-12B+[COLOUR TEMP]+[LENS]*	
12 x MBL1	Silver	CLED-MBL1-12S+[COLOUR TEMP]+[LENS]*	



\* ADD LENS TYPE & COLOUR TEMP TO END OF CODE

(WD - WIDE / ME - MEDIUM / MN - NARROW-MEDIUM / NA - NARROW & 3K / 4K) E.G. CLED-MBL1-6B-WD-3K



## OVERVIEW

The larger of the 2 MBL LED fittings, the MBL2 features the same magnetic articulation system present in all the fittings in the range.

The magnetic ball allows complete freedom of movement, so the fitting can be tilted and rotated to point exactly as required.

Available in 2 colour temperatures and with a choice of optics, the MBL2 can be finished to match any decor and provides contemporary, functional light in any environment.

## EASY INSTALLATION

The MBL fitting range can be easily installed on any rigid surface.

Simply pull the base cap up from the mounting foot to reveal the 3 mounting holes.

Mark the positions for the holes and also mark a position for the fittings power cable. Drill pilot holes for the mounting screws and a 5mm diameter hole for power cable.

Push the power cable through hole, and screw the fitting to mounting surface.

Finally, connect all power cables to the junction box and switch on power.

## LED TECHNICAL SPECIFICATIONS

Description	Details
LED type	Oslon, white light
Voltage	2.9V (min.) - 3.0V (max.)
Power consumption	1.12W per fitting, not inc. driver
Colour temperatures / CRI	3000K - warm white / 95CRI 4000K - neutral white / 95CRI
Dimming	Manual 0-100%
Typical luminous flux*	3000K - 71lm / 4000K - 73lm
Lens Options	Narrow - 13.5° Medium - 19° Wide - 28°
LED life	50,000 hours in ambient 25°C
Material / Finish	Aluminium, black or white

\* MEASURED WITH 19° LENS



# LARGE FITTINGS WITH MAGNETIC ARTICULATION



LARGE SURFACE  
MOUNT DOWNLIGHT  
WITH FULL 360°  
ARTICULATION



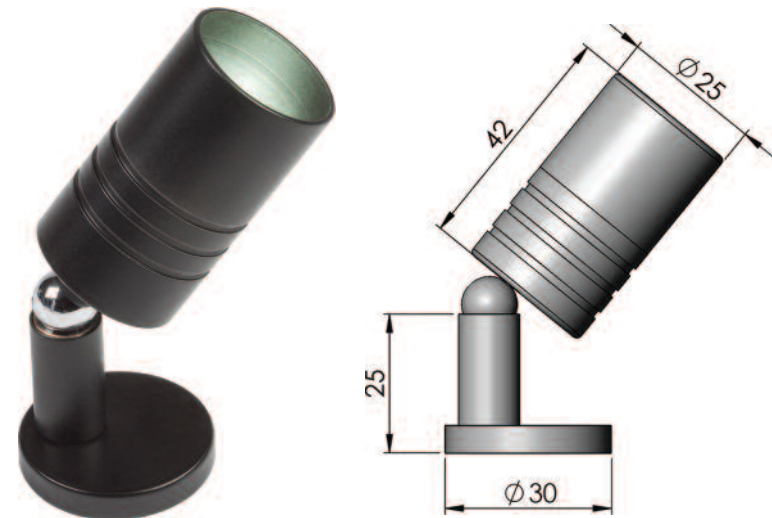
LUMENS/WATT  
3000K: 40LM/W  
4000K: 42.7LM/W

**MBL2 LED DOWNLIGHT KIT** A LARGE MAGNETIC FITTING WITH FULL TILT AND ROTATION | 2.5M OF CABLE ON EACH FITTING

No. of Fittings	Bezel Colour	Ordering Code	Price
4 x MBL2	Black	CLED-MBL2-4B+[COLOUR TEMP]+[LENS]*	
4 x MBL2	Silver	CLED-MBL2-4S+[COLOUR TEMP]+[LENS]*	
6 x MBL2	Black	CLED-MBL2-6B+[COLOUR TEMP]+[LENS]*	
6 x MBL2	Silver	CLED-MBL2-6S+[COLOUR TEMP]+[LENS]*	
8 x MBL2	Black	CLED-MBL2-8B+[COLOUR TEMP]+[LENS]*	
8 x MBL2	Silver	CLED-MBL2-8S+[COLOUR TEMP]+[LENS]*	
10 x MBL2	Black	CLED-MBL2-10B+[COLOUR TEMP]+[LENS]*	
10 x MBL2	Silver	CLED-MBL2-10S+[COLOUR TEMP]+[LENS]*	
12 x MBL2	Black	CLED-MBL2-12B+[COLOUR TEMP]+[LENS]*	
12 x MBL2	Silver	CLED-MBL2-12S+[COLOUR TEMP]+[LENS]*	



\* ADD LENS TYPE & COLOUR TEMP TO END OF CODE  
(WD - WIDE / ME - MEDIUM / NA - NARROW & 3K / 4K) E.G. CLED-LD3-6B-WD-3K









Set in the glorious Grade 1 listed building, The King's House, the Salisbury Museum's archaeological collections include prehistoric material from South Wiltshire and Stonehenge, the Pitt Rivers' Wessex collection and a grand medieval collection with items from the Old Sarum, Claredon Palace and the city itself, which tell the unique story of continuous human achievement over the last half a million years.

London lighting design consultancy, Sutton Vane Associates, were given the complex task of designing the lighting scheme for the new gallery's display cases, each of which were custom-made by UK showcase manufacturers, Mayvaert. Given the age and historical importance of the artefacts being displayed, it was imperative that the lighting didn't cause any irreversible damage and so Sutton Vane Associates opted to specify our fibre optic products that are free from ultraviolet rays and heat.

Our made-to-order Light Bar system is used to illuminate the gallery's thirty large display cases, with 27mm diameter light bars installed in the sides of the cases, providing minimal distraction to visitors. Each light bar has been made to match the height of its case and features a flat front on which our mini trumpet extrusions are fitted. Once fitted the trumpets are then adjusted to accentuate specific details of the artefacts.

Powering all of the light bars are thirty of our Mercury LED light sources, each of which are located in the base of the display cabinets for ease of access. The Mercury was chosen for its high CRI >90, choice of colour temperatures and dimming functionality, all of which are ideal for display illumination.

## Project Information

### 📍 Museum Case Lighting

**Light sources:** Mercury High CRI LED

**Harnesses:** Glass fibre, 4.3mm active diameter

**End fittings:** UFO 9D & 34D fittings installed in light bar extrusion

📍 **Location:** London, England

🏢 **Category:** Public realm, display lighting

👤 **Client:** Sutton Vane Associates

📅 **Project completed:** 2015

📷 **Images:** Hufton+Crow  
Sutton Vane Associates



## OVERVIEW

MetroLED is a versatile lighting system used for illuminating precious objects and artefacts within the museum, gallery and retail sectors. It has been designed with ease of use and maintainability in mind, and is now available in kit format for those who require a quick and effective means of illumination.

Our gantry kit is ideally suited for use in display cabinets and cases thanks to the versatility that it offers. It comes with a LED linear light bar that provides a wash of light across the area that it is illuminating below. The light bar is available in a choice of colour temperatures and can rotate up to 350°, allowing you to direct the light where it is needed most.

The gantry can be supplied in a range of widths to suit all manner of display cases and includes a power cable and mounting feet for hassle free installation. Dimming functionality is also available and should be specified when placing an order.

## EASY INSTALLATION

All of our MetroLED components were designed to be extremely simple to install and operate, and the gantry system is no exception.

Simply mark and drill 2 x 25mm holes in the mounting surface and drop the gantry through. Be aware that only 1 of the gantry legs has a power track inside, so position this leg closest to your power source. The power leg will be marked so you know which it is.

Working underneath the surface, tighten the supplied half nuts onto the mounting feet to secure the gantry in place.

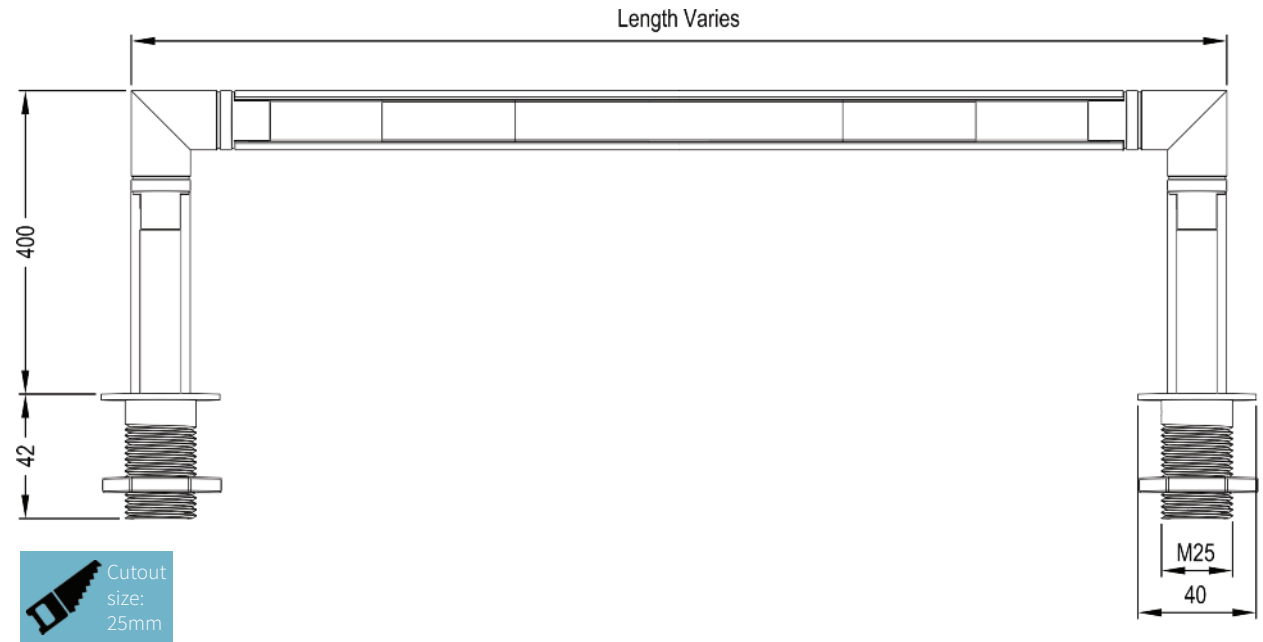
Plug the power in connector in to the leg which carries power and switch the mains power switch on to illuminate the gantry.



## LED TECHNICAL SPECIFICATIONS

Description	Details
Mains supply voltage	100-240V AC, 50-60Hz
PSU output	5V DC
LED current	10mA
Min. ambient temperature	-10°C
Max. ambient temperature	45°C
Power connection	2.1 x 5.5 x 12mm
LED type	Oslon, white light
CRI	92 (typical)
Colour temperature	3000°K and 4000°K
LED Efficiency*	50 Lumen / W (typical)
LED life	50,000 hours in ambient 25°C

\* MEASURED USING 45MM LINEAR STRIP



## ORDERING CODES

Total Length	Maximum Height	Extrusion Profile	Power Supply	Ordering Code 3000K COLOUR TEMP	Price	Ordering Code 4000K COLOUR TEMP	Price
1000mm	400mm	Round	Standard	CMG-10-ND-3K		CMG-10-ND-4K	
1000mm	400mm	Round	Dimmable	CMG-10-D-3K		CMG-10-D-4K	
1200mm	400mm	Round	Standard	CMG-12-ND-3K		CMG-12-ND-4K	
1200mm	400mm	Round	Dimmable	CMG-12-D-3K		CMG-12-D-4K	
1500mm	400mm	Round	Standard	CMG-15-ND-3K		CMG-15-ND-4K	
1500mm	400mm	Round	Dimmable	CMG-15-D-3K		CMG-15-D-4K	



## OVERVIEW

MetroLED is a versatile lighting system used for illuminating precious objects and artefacts within the museum, gallery and retail sectors. It has been designed with ease of use and maintainability in mind, and is now available in kit format for those who require a quick and effective means of illumination.

Our linear kit is ideal for those who require unobtrusive, light washes in indoor environments. The kit comprises of a LED linear light bar set in a round or rectangular extrusion, and can be specified with a warm or cold LED light and dimming functionality to suit all manner of requirements.

The linear bar is available in 3 lengths and comes with a power cable, end caps and mounting clips for easy installation in recessed channels in almost any surface. The minimalist design of the linear bar means it is the ideal choice for those requiring subtle up or downlighting.

## EASY INSTALLATION

Extremely easy to install, our linear LED kits offer the simplest and quickest way to provide a wash of light in a recessed alcove, on a bookcase or underneath a shelf.

Each linear LED strip is supplied with 2 mounting clips. These should be positioned at each end of the strip.

Mark the clip positions and drill holes to take countersunk M4 self tapping screws. Screw the clips to the mounting surface.

Then, simply push the linear strip into the clips so that they hold it in place, and switch on the mains power.



## LED TECHNICAL SPECIFICATIONS

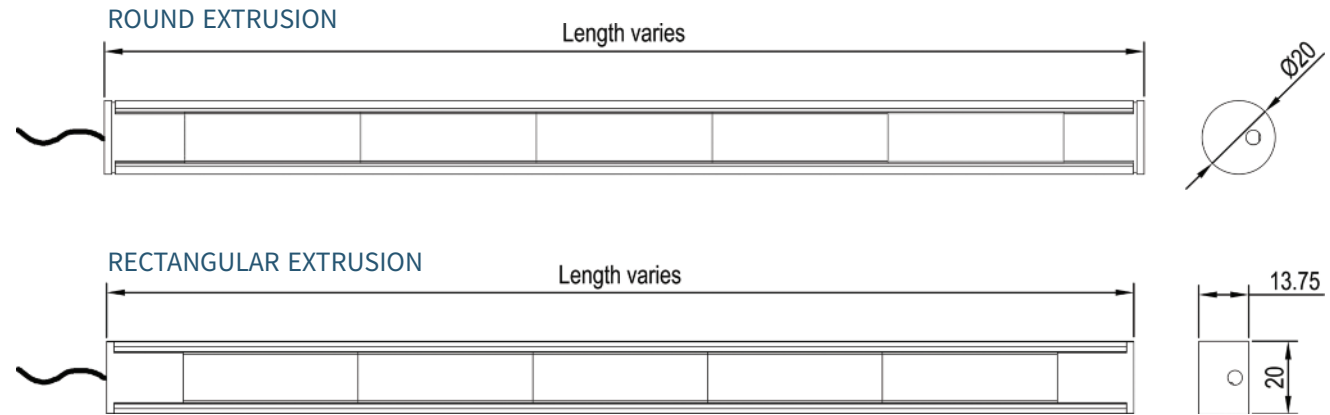
Description	Details
Mains supply voltage	100-240V AC, 50-60Hz
PSU output	5V DC
LED current	10mA
Min. ambient temperature	-10°C
Max. ambient temperature	45°C
Power connection	2.1 x 5.5 x 12mm
LED type	Oslon, white light
CRI	92 (typical)
Colour temperature	3000°K and 4000°K
LED Efficiency*	50 Lumen / W (typical)
LED life	50,000 hours in ambient 25°C

\* MEASURED USING 45MM LINEAR STRIP

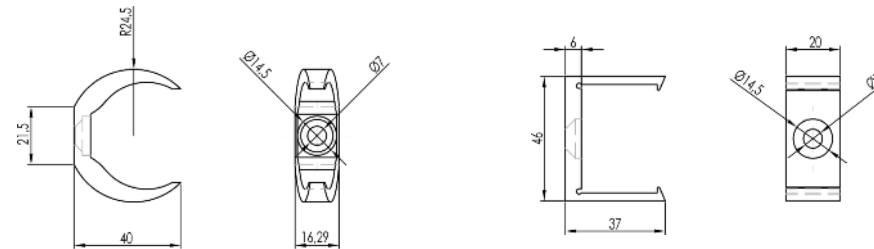
## ORDERING CODES

Total Width	Power Supply	Ordering Code ROUND EXTRUSION	Price	Ordering Code RECTANGULAR EXTRUSION	Price
1000mm	Standard	CML-RND-10-ND+[COLOUR TEMP]*		CML-REC-10-ND+[COLOUR TEMP]*	
1000mm	Dimmable	CML-RND-10-D+[COLOUR TEMP]*		CML-REC-10-D+[COLOUR TEMP]*	
1200mm	Standard	CML-RND-12-ND+[COLOUR TEMP]*		CML-REC-12-ND+[COLOUR TEMP]*	
1200mm	Dimmable	CML-RND-12-D+[COLOUR TEMP]*		CML-REC-12-D+[COLOUR TEMP]*	
1500mm	Standard	CML-RND-15-ND+[COLOUR TEMP]*		CML-REC-15-ND+[COLOUR TEMP]*	
1500mm	Dimmable	CML-RND-15-D+[COLOUR TEMP]*		CML-REC-15-D+[COLOUR TEMP]*	

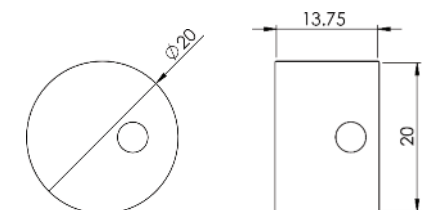
\* ADD COLOUR TEMPERATURE TO END OF CODE (3K - 3000K / 4K - 4000K). E.G. CML-REC-10-ND-3K



## MOUNTING C-CLIPS



## PROFILE ACTUAL SIZES





## OVERVIEW

Offering the ultimate in versatility, the system comprises a surface mounted extruded aluminium track which is paired with up to 10 magnetic Attracta fittings. The fitting's magnetic attraction to the track allows them to be freely placed, moved, slid and removed without any interference from wires or cables. Two fitting designs are available, each offering a choice of colour temperatures. The larger F2 fitting also offers brighter output.

The Attracta fittings offer full 360° rotation as well as 180° of tilt - they really can be pointed in almost any direction imaginable. These Attracta kits are also supplied with a driver unit allowing the fittings to be manually dimmed using the built-in potentiometer.

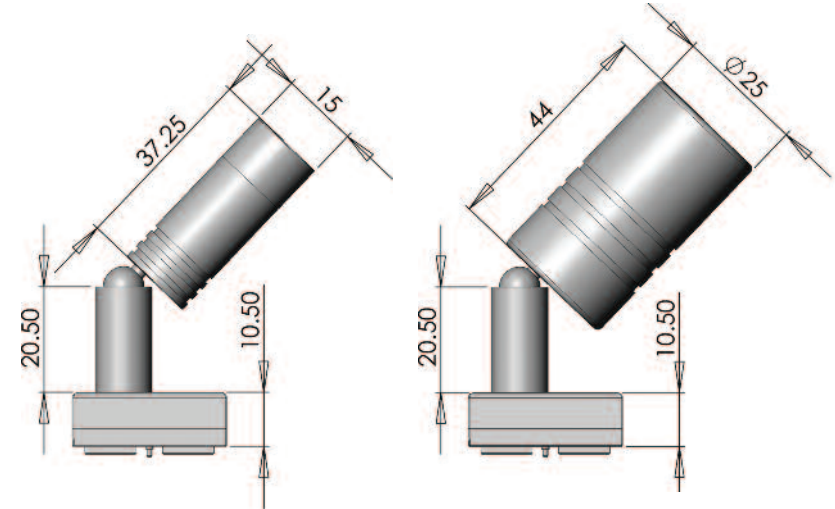
## LED TECHNICAL SPECIFICATIONS

Description	F1 Fitting Details	F2 Fitting Details
LED type	Oslon, white light	Oslon, white light
Drive current	131mA	582mA
Mains supply voltage	100-240V AC, 47-63 Hz, 0.58A	100-240V AC, 47-63 Hz, 0.58A
PSU output	5V DC	5V DC
Driver working current	1500mA per channel	1500mA per channel
Dimming	Manual dimming	Manual dimming
Lux levels (3000K measured at specified distances)	0.5m - 827 lux 1.0m - 206 lux 1.5m - 90 lux	0.5m - 2061 lux 1.0m - 575 lux 1.5m - 258 lux
Colour temperature / CRI	3000K - 95CRI (typical) 4000K - 95CRI (typical)	3000K - 95CRI (typical) 4000K - 95CRI (typical)
Optics	16° / 23° / 36° / 61°	13.5° / 19° / 28°
LED life	50,000 hours in ambient 25°C	50,000 hours in ambient 25°C
Material / Finish	Aluminium / Anodised black	Aluminium / Anodised black





Image shows F1 fittings. F2 kit contains larger fittings.

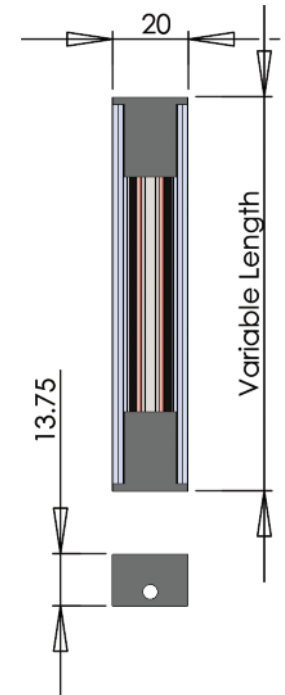


ATTRACTA F1

ATTRACTA F2

## ORDERING CODES

Total Length	Number of Fittings	Ordering Code WITH F1 FITTINGS	Price	Ordering Code WITH F2 FITTINGS	Price
1000mm	6	CATR-10-6-F1+[LENS]+[COLOUR TEMP]*		CATR-10-6-F2+[LENS]+[COLOUR TEMP]*	
1000mm	8	CATR-10-8-F1+[LENS]+[COLOUR TEMP]*		CATR-10-8-F2+[LENS]+[COLOUR TEMP]*	
1000mm	10	CATR-10-10-F1+[LENS]+[COLOUR TEMP]*		CATR-10-10-F2+[LENS]+[COLOUR TEMP]*	
1200mm	6	CATR-12-6-F1+[LENS]+[COLOUR TEMP]*		CATR-12-6-F2+[LENS]+[COLOUR TEMP]*	
1200mm	8	CATR-12-8-F1+[LENS]+[COLOUR TEMP]*		CATR-12-8-F2+[LENS]+[COLOUR TEMP]*	
1200mm	10	CATR-12-10-F1+[LENS]+[COLOUR TEMP]*		CATR-12-10-F2+[LENS]+[COLOUR TEMP]*	
1500mm	6	CATR-15-6-F1+[LENS]+[COLOUR TEMP]*		CATR-15-6-F2+[LENS]+[COLOUR TEMP]*	
1500mm	8	CATR-15-8-F1+[LENS]+[COLOUR TEMP]*		CATR-15-8-F2+[LENS]+[COLOUR TEMP]*	
1500mm	10	CATR-15-10-F1+[LENS]+[COLOUR TEMP]*		CATR-15-10-F2+[LENS]+[COLOUR TEMP]*	



\* ADD LENS TYPE & COLOUR TEMP TO END OF CODE  
 (16 / 23 / 36 / 61 for F1 or 13.5 / 19 / 28 for F2 & 3K / 4K) E.G. CATR-10-6-F1-16-3K



# OUR LIGHTING IS ILLUMINATING EXHIBITS...



The Novium, Chichester



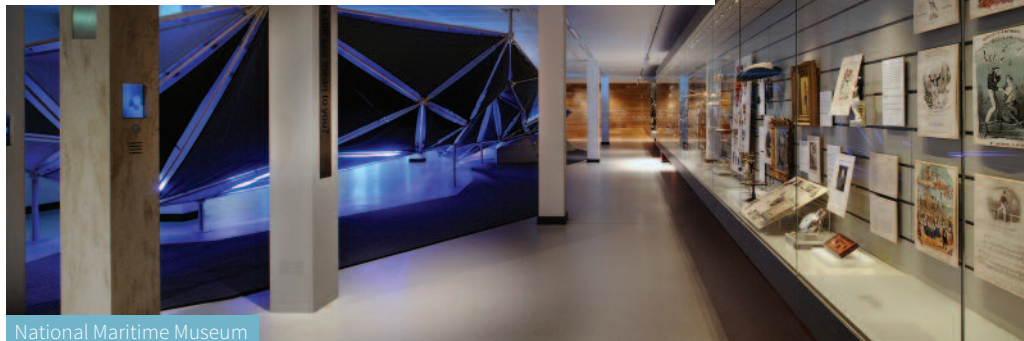
EMP Museum



Westminster Abbey



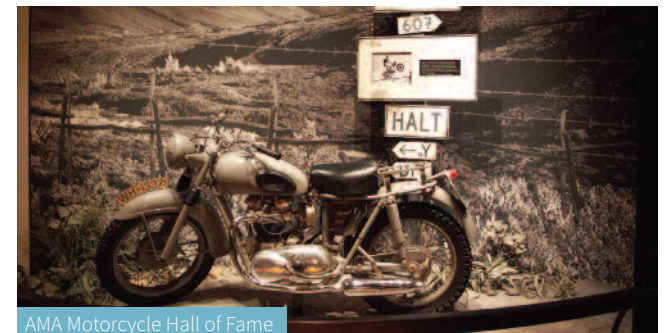
Weston Park Museum



National Maritime Museum



The Polar Museum



AMA Motorcycle Hall of Fame



...THROUGHOUT THE UK, ACROSS EUROPE, THE AMERICAS AND BEYOND



Salisbury & South Wiltshire Museum



Museum of Somerset



Cambridge Press Museum



Stirling Castle



Robert Burns Museum



The Art Gallery of Ontario





Made in the United Kingdom



Universal Fibre Optics Ltd  
Home Place  
Coldstream, TD12 4DT  
United Kingdom

t. +44 (0)1890 883416  
www.ufo.lighting



Universal Fiber Optic lighting LLC  
6119A Clark Center Avenue  
Sarasota, FL34238  
United States

t. 941-343-8115  
www.fiber opticlighting.com



UniversalFibreOptics



@universalf



ILLUMINATING THE WORLD FOR OVER 25 YEARS

DISTRIBUTED BY

